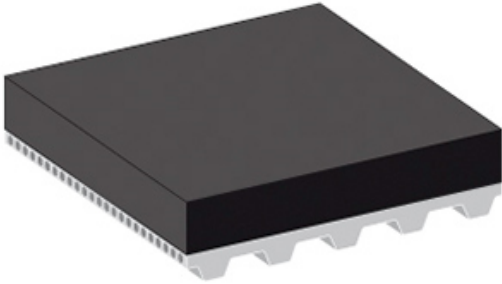


Coating Data Sheet



Designation

Coating type description OLD	EPDM
Coating type description NEW	EPDM

Design

Coating Material	Synthetic rubber (EPDM)
Colour	Black
Surface pattern	Smooth (sanded)

Technical data

Hardness [Shore(A)]	70
Density [kg/m ³]	
Coating thickness min. [mm]	2.0
Coating thickness max. [mm]	10.0
d factor *	25
Minimum pulley diameter D _{min} (approx.) [mm]	[d factor] x [selected coating thickness]
Minimum operating temperature [°C]	-40
Maximum operating temperature [°C]	100

Coefficient of static friction

against PE foil	0.61
against wood	0.69
against sheet glass	0.67
against cardboard	0.78
against aluminium	0.69
against steel sheet	0.97

Coating Data Sheet

Properties

Electrostatic properties	non-conductive
Wear resistance	high
Compressibility	No
Product release properties	medium
Cleanability	good

Chemical resistance

General chemical resistance to	Insufficient fat and oil resistance
--------------------------------	-------------------------------------

Special Fabrication

Sanding	Yes
Milling	Yes
Punching	Yes

Applications

Bottle inspection lines, Metal parts conveying, Conveying of abrasive goods

General remarks

Excellent abrasion and cut resistance. Temperature range limited by PU timing belt material.