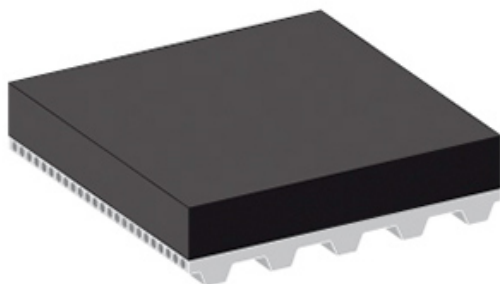


## Coating Data Sheet



### Designation

Coating type description OLD	SZ / Porol
Coating type description NEW	Porol

### Design

Coating Material	Cellular rubber
Colour	Black
Surface pattern	Foam, closed cell

### Technical data

Hardness [Shore(A)]	
Density [kg/m <sup>3</sup> ]	165
Coating thickness min. [mm]	5.0
Coating thickness max. [mm]	15.0
d factor *	10
Minimum pulley diameter D <sub>min</sub> (approx.) [mm]	[d factor] x [selected belt thickness]
Minimum operating temperature [°C]	-40
Maximum operating temperature [°C]	70

### Coefficient of static friction

against PE foil	1.06
against wood	1.20
against sheet glass	1.07
against cardboard	1.03
against aluminium	1.31
against steel sheet	1.10

## Coating Data Sheet

### Properties

Electrostatic properties	non-conductive
Wear resistance	low
Compressibility	Yes
Product release properties	low
Cleanability	effortful

### Chemical resistance

General chemical resistance to	Generic fats and oils
--------------------------------	-----------------------

### Special Fabrication

Sanding	Yes
Milling	Yes
Punching	Yes

### Applications

Conveying of sensitive goods

### General remarks

Excellent cushioning and conforming to products. Excellent for gentle conveying of sensitive goods. Cell structure closed.